



LAKE SHORE PUBLIC SCHOOLS

MiSafe Start Return to Learning Plan

Ready For Anything

2020-2021

Vision & Values

- Our first priority is the health and safety of our students and staff.
- Students will be taught by caring, certified Lake Shore staff, using the same rigorous curriculum, whether choosing in person instruction or 100% virtual.
- We will seek to meet the unique needs of our families, students and staff members.
- We will provide clear, ongoing communication and will seek input from families and staff as changes arise throughout the school year.





LAKE SHORE PUBLIC SCHOOLS MiSafe Start Return to Learning Plan

Ready For Anything



Return to School Road Map

Lake Shore Public Schools gathered a committee of 176 volunteers to work through the Governor's Return to School

Road Map to create an educational environment that will be both safe and conducive to learning. Three sub-committees were formed: Health and Safety, Teaching and Learning, Mental and Social-Emotional Wellbeing.

The recommendations of the Lake Shore Public Schools Mi Safe Return to Learning Plan are a result of the inclusive work of this committee.

School starts September 8th



GOVERNOR'S EXECUTIVE ORDER

PHASE ONE - THREE

100% Virtual Learning Option for all students preK - 12

- A combination of live and recorded lessons in addition to independent learning activities.
- Virtual real-time instruction and/or connection
- Support services related to IEPs, 504s, academic support, and social/emotional concerns will be provided.
- GSRP preschool will follow the learning program developed by MISD.



PHASE FOUR-

Begin phase in plan for In Person instruction for all buildings for preK - 12

- A blend of in person and virtual learning will occur.
- Facial covering will be required preK - 12.
- Medical personnel on site at each building to assess need for quarantine

100% Virtual Learning Option for all students K - 12

- All instructional services and support supplied during phases 1 - 3.
- Additional access to in person classes, extra-curriculars, etc.



PHASE FIVE-

Continue phase in plan for In Person instruction for all buildings for preK - 12

- A blend of in person and virtual learning will continue to occur, as necessary.
- All safety recommendations remain in place.

100% Virtual Learning Option for all students K - 12

- All instructional services and support supplied during phases 1 - 3.
- Ability to choose to return to in-person instruction at semester/trimester onsets.



PHASE SIX-

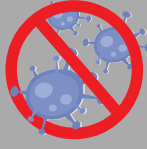
(POST PANDEMIC)

In Person instruction in all buildings for preK - 12

- Safety recommendations remain in place, where applicable.

100% Virtual Learning Option for all students K - 12

- All instructional services and support supplied during phases 1 - 3.
- Ability to choose to return to in-person instruction at semester/trimester onsets.

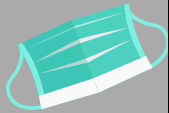




LAKE SHORE PUBLIC SCHOOLS MiSafe Start Return to Learning Plan

Ready For Anything

PHASE FOUR UNFOLDED

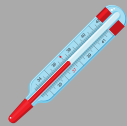


PPE

Facial coverings are required for:

- Staff
- All preK -12 students
- All preK -12 students on busses
- All preK- 12 students in hallways and common areas

Those who are unable to medically tolerate a mask (upon notice from a physician) are not required to wear one



Hygiene, Screening & Positive Cases

Certified Medical Assistants at each school

Follow Macomb County Health Department protocols regarding positive or suspected cases

Supplies provided to promote safety & hygiene

Limit visitors and screen upon arrival

Limit or restrict the use of shared materials and lockers

Monitor students upon arrival and throughout the school day and perform temperature checks as needed



Cleaning

Frequent, scheduled cleaning of common areas and touch points

Classroom desks and other shared spaces cleaned between uses

Staff trained on proper cleaning practices

Scheduled cleaning of playground equipment



Busing

Transportation provided for homeless students and where required as part of an Individualized Education Plan (IEP)

Transportation is temporarily suspended for general education programs



Medically Vulnerable Students and Staff

District will work with parents and students to address the needs of medically vulnerable students

District has established a criteria for evaluating requests of medically vulnerable staff requesting virtual assignments



Athletics

Follow Macomb Area Conference (MAC) League and Michigan High School Sports Athletic Association (MHSAA) guidance



LAKE SHORE PUBLIC SCHOOLS

MiSafe Start Return to Learning Plan

Ready For Anything

STUDENT LEARNING OPTIONS



IN-PERSON INSTRUCTION

- The district will use a phased approach to safely returning students to in person instruction.
- A return to in person instruction from remote learning, whether due to moving from Phase 3 or to establish a safe return during Phases 4 and 5, will begin with a staged return that limits students and staff in a building.
- Masks will be required preK - 12 for students and staff.
- The district will follow health department guidelines for screening of students and staff.
- Medical personnel on site at each building to assess the need for student/staff quarantine.
- Child care (SACC) will be available to K-5 students before and after school on days they attend in-person instruction.
- Lunch schedules will be modified and additional areas utilized to promote social distancing.
- Classroom desks and other shared spaces will be cleaned between uses.
- Services and resources will be provided that support social and emotional development.
- Transportation provided ONLY for homeless students and where required as part of an Individualized Education Plan (IEP).

VIRTUAL LEARNING OPTION

- Online learning opportunities for students in grades K-12.
- Agendas provided to guide daily learning
- Students will be taught by Lake Shore Teachers using the district curriculum
- Courses housed in the Schoology platform.
- A combination of live and recorded lessons in addition to independent learning activities.
- Parents can monitor learning experiences, feedback and assessment with their own Schoology account.
- Daily virtual, real-time instruction and/or connection with teachers
- Learning experiences and material.
- Access to most classes offered in person at our buildings.
- Support services related to IEPs, 504s, academic support, and social/emotional concerns will be provided.
- Access to academic counseling and other services available to all Lake Shore students.
- Opportunity to participate in Athletics and extra-curricular activities.
- Opportunity to return to in-person instruction as the plan allows.

REGISTRATION



Virtual Option registration

OPEN