

COLLABORATIVE AGENCIES

COMMUNITY HOUSING NETWORK
248.269.1348 or 248.928.0111

DISABILITY ATTORNEYS OF MICHIGAN
888.886.6400

DISABILITY NETWORK OAKLAND & MACOMB
586.268.4160

GOOD SHEPHERD COALITION
586.415.8100

GREAT START COLLABORATIVE
www.greatstartmacomb.org

HABITAT FOR HUMANITY
586.263.1540

LEGAL AID AND DEFENDERS
586.465.1344

MACOMB CARE CONNECT
586.783.9355

MACOMB HOMELESS COALITION
586.285.0400

MICHIGAN REHABILITATION SERVICES
586.498.5852

MOLINA HEALTHCARE
248.925.1760

SOUTHWEST HOUSING SOLUTIONS
313.815.3646 or 313.841.9641

THE SALVATION ARMY
586.469.6712

VETERAN SERVICES OF MACOMB COUNTY
586.463.3538

Loving God ~ Loving People ~ Serving Our Community



*Let us not love with words or tongue
but with actions and with truth.*

1 JOHN 3:18

SUPPORTERS



hope|center
in macomb

33222 GROESBECK HIGHWAY, FRASER, MI 48026
ADMINISTRATIVE OFFICE • 586.491.2924
Pantry • 586.294.4673 | Fax • 586.294.4678
www.hopecentermacomb.org

hope|center
in macomb

LOVING GOD ~ LOVING PEOPLE ~ SERVING OUR COMMUNITY



Hope Center is a non-profit, volunteer driven, human services organization. Our purpose and desire is to address the hunger crisis and respond to the needs of the residents of Macomb County. We are meeting this need through our no cost, client choice food pantry.

Our mission is to transform lives one family at a time. Hope Center's goal is to promote the development and well-being of people in need. We accomplish this by partnering with other human service agencies to connect families with a wide range of community resources at our one-stop-shop of human services.

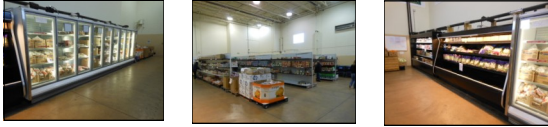
SUPPORTED BY:





CLIENT-CHOICE FOOD PANTRY

- Grocery store style



- Non-perishable and perishable food
- Food is distributed based on the number of members in the household



Example: 2 adults and 2 children will receive up to 90 pounds of non-perishable food and up to 130 pounds of perishable food.

- Pantry access is limited to 6 times per calendar year (no more than once every 30 days)
- Hours of Operation:
MONDAY — CLOSED
TUES. THRU SAT. 9 AM — 3 PM
- **Access to the food pantry is by appointment only.**

SCHEDULE ONLINE AT:
www.hopcentermacomb.org

OR CALL:
586.294.HOPE or 586.294.4673

REQUIRED DOCUMENTATION FOR FOOD PANTRY

- **Must be a Macomb County Resident**
- **Proof of Identity for every adult in the household (age 18 and up):** State ID or Driver's License—must have a current and valid photo ID (*U.S. residency cards and Green Cards are not permissible*)
- **Proof of residency for every adult in the household (age 18 and up):** Current piece of first class mail that matches ID (*dated within 30 to 45 days*), i.e., utility bill; mortgage statement, medical bill, bank statement, credit card bill, etc.
- **Proof of all children in household (age 17 and under):** Birth Certificate, current School ID, Friend of the Court documents, Health Insurance card w/child's name on it, or 194 Employment Cards (*children only*)

SPIRITUAL GUIDANCE

Trained Chaplains onsite daily at Hope Center

SUPPORT GROUPS AT THE WOODS CHURCH email: supportgroups@thewoodchurch.org

1st Place 4 Health—A biblical approach to weight loss and overall health.

Addiction Recovery for Men — A Christ centered open meeting using 12 Step Principles

Addiction Recovery for Women — A Christ centered open meeting using 12 Step Principles

Divorce Care—A friendly, caring group of people who will walk alongside you through one of life's most difficult experiences.

Divorce Care 4 Kids—A special group to help your children heal from the pain caused by separation or divorce.

Grief Share—Comfort and help in your time of grief.

ON-SITE AGENCIES, PROGRAMS & SERVICES



A mentoring program for individuals and families to achieve long term stability and self-sufficiency. The program counsels and educates on how to utilize local agency resources and provides group networking opportunities and support.



A program to establish school located community gardens throughout Macomb County with a goal to not only educate students, but to provide fresh produce for school lunch programs and the community.



A HUD and MSDHA approved counseling agency offering customized financial plans to specific needs and situations. Southwest is recognized as the lead agency in southeast Michigan for its foreclosure, pre/post purchase, and rental counseling.



A nonprofit organization committed to securing permanent solutions to homelessness and access to affordable housing, through proven strategies of prevention, development of affordable housing, housing assistance including supportive housing.



A health insurance choice for individuals eligible and/or receiving Medicare and Medicaid benefits.



Volunteer Income Tax Assistance

A no cost income tax preparation program for low income individuals and families available February through April.

